

LIQUID FLASHING & DETAIL SEALANT

BarriBond HP (High Performance)

Description

BarriBond HP is a high-performance, silane-terminated polyether (STPE) based compound designed for use in joints, terminations, openings, and other details in CCW Air Barrier Systems. BarriBond HP is a single-component, moisture-cured adhesive/sealant which is applied from a sausage caulking gun, then spread and shaped with a trowel, squeegee, or other tool. BarriBond HP is offered in a signature navy blue color for easy identification in warranted CCW Air Barrier Systems. The product is formulated for clean, easy application over horizontal, vertical, and inverted surfaces. BarriBond HP's ultra high polymer content formula makes it the toughest and most versatile product in its class.

Features and Benefits

- Approved for use in all CCW Air Barrier systems
- Approved for use with CCW MiraDRI™ Self-Adhered Waterproofing Systems*
- Compatible with many building materials
- Convenient 20 fl. oz. (0.6 L) sausage pack for long shelf life, easy extrusion over broad temperature range, and minimal waste
- Signature navy blue color for easy identification
- High solids: one-coat application, fills cracks and gaps up to 1" (25.4 mm) wide, virtually no shrinkage after cure
- Tough membrane with high elongation covers holes and gaps while withstanding differential movement
- Resists rain within minutes of application; resistant to standing water after cure
- Reduces labor and time versus peel & stick flashings
- Low-odor formula is VOC-compliant in 50 states
- High UV resistance, suitable for permanent exposure

* Refer to CCW Technical Bulletin BarriBond HP Use with CCW MiraDRI 860/861 & 860-ULT Waterproofing for more information

Application

Substrate Preparation

Surfaces shall be dry and free of oil, dust, and excess mortar droppings. Concrete masonry joints shall be free of voids and shall be tooled or struck flush. Gaps from ¼" to 1" wide shall be fitted with backer rod. Joints receiving backer rod shall provide a sealant depth of at least ¼" but not more than ½". Acceptable substrates include concrete masonry units, mortar/grout, concrete, exterior grade gypsum board, plywood, OSB, wood, aluminum, galvanized metal, and anodized aluminum. Any damaged gypsum sheathing should be replaced. Voids or irregularities in concrete or masonry substrates should be patched using a cementitious patching compound as needed.



1 Detail



2 Apply



3 Trowel



4 Check

LIQUID FLASHING & DETAIL SEALANT

BarriBond HP (High Performance)

BarriBond HP Use in CCW Air Barrier Systems

Acceptable CCW Membrane Products	Acceptable Applications
Sheet Products	
Fire-Resist 705 FR-A*	Surface prep (installed before wall membrane): Gap Fill, Fillet Beads
Fire-Resist 705 VP	
CCW-705*	Membrane Detailing: Rough Openings, Pipe/Duct Penetrations, T-Joints, Reverse Laps, Field-Cut Edges, Corner Pinholes, Screw/Hardware Penetrations, Membrane Terminations
CCW-705 HT	
CCW-705 RS	
CCW-705 TWF*	
Liquid Products	
Fire-Resist Barritech VP	Install before or after membrane: Gap Fill, Fillet Beads, Sheathing Board Joints, Screw Patches, Inside & Outside Corners, Rough Openings, Pipe/ Duct Penetrations, Screw/ Hardware Penetrations, Transition to Neighboring WRB, Roof or Waterproofing System
Fire-Resist Barrithane VP	
Fire-Resist Barritech NP™	
Fire-Resist Barritech NP LT	
Barriseal®	

*Includes XLT formula

BarriBond HP can be applied over or under all CCW membrane products listed in the table above. When BarriBond HP is a substrate for CCW sheet membranes, allow it to cure firm and coat the surface with a CCW Contact Adhesive.

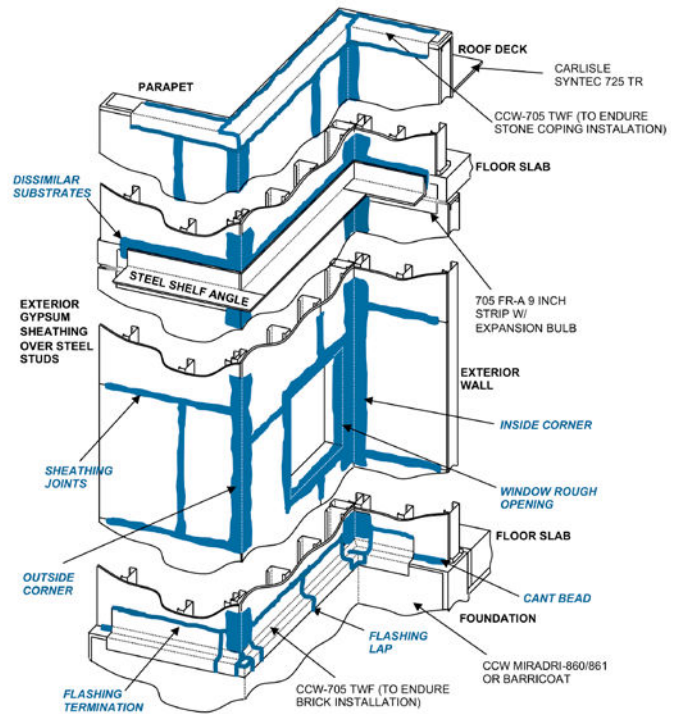
The sausage should be loaded into a suitable caulking gun. Cut nozzle orifice to user-preferred size and shape with a sharp utility knife or similar tool. For best results, BarriBond HP should be stored above 50°F during wintertime applications.

Compatibility

BarriBond HP is compatible with many common building materials including plywood, OSB, fire-treated wood, pressure-treated wood, concrete, CMU, glass-mat faced gypsum sheathing, aluminum, copper, and PVC extrusion/pipe. BarriBond HP is also compatible with R2+ Polyiso (foam core and facers).

BarriBond HP will not adhere to cured silicone. However, various silicone sealants commonly specified for sealing the window frame to the rough opening are compatible with cured BarriBond HP. These can be used to seal the window frame directly to cured BarriBond HP. Please consult CCW for a list of acceptable silicone window sealants.

Typical Wall Details



Liquid Flashing Application (Rough Openings, Pipe/Duct Penetrations, Inside/Outside Corners)

Apply BarriBond HP in serpentine beads over the substrate. Spread using a squeegee or a trowel to provide full, uniform coverage over the substrate. Apply to openings, pipe/duct penetrations, and inside/outside corners as shown in CCW's Air Barrier System standard details. Apply BarriBond HP at a uniform wet mil thickness of 40 mils (0.040"). Check frequently using a wet film thickness gauge to ensure adequate coverage. BarriBond HP can be applied in a single coat. To facilitate installation, joints and gaps between dissimilar substrates may be treated with BarriBond HP and allowed to cure until firm before proceeding with trowel coverage of the liquid flashing area. Gypsum sheathing raw edge shall be treated with CCW-702, 702 LV, or 702 WB to enable BarriBond HP coverage and adhesion. In liquid flashing applications, BarriBond HP shall tie into the main CCW Air Barrier Membrane with a minimum 2" lap. CCW BarriBond HP can be applied over all CCW Air Barrier Membranes. Depending on construction sequencing, CCW membranes also can be applied over BarriBond HP.

Detailing Sealant Applications (Sheathing Joints, Dissimilar Substrates, Non-Moving Cracks, Termination Mastic)

BarriBond HP can be used to fill joints, seams, and cracks on common exterior building substrates. All joints ¼" wide or greater shall be filled with backer rod prior to the application of BarriBond HP. Apply a generous bead of BarriBond HP over joints, seams, or cracks. Tool BarriBond HP using a putty knife, trowel, or similar tool. Apply BarriBond HP over sheathing joints with a "ribbon" of sealant, a minimum of 40 mils (0.040") in thickness and extending a minimum of 1" beyond each side of the joint. When using BarriBond HP to detail CCW sheet membranes or flashings, extrude a continuous ⅜" bead and use CCW's sealant feathering tool to cover terminations, reverse laps, field-cut edges, and T-joints. BarriBond HP can also be applied as a cant bead in inside corner conditions.

Elastomeric Joint Sealant Application (Expansion/Control Joints, Window-Rough Opening Joint):

BarriBond HP can be used as an elastomeric joint sealant in conditions such as expansion or control joints in CMU or concrete walls and to seal the window/door frame to the rough opening. In these applications, the joint and substrates shall be clean, sound, dry, and free of silicone or other bond-breaking contaminants. Joint shall be minimum ¼" wide and maximum 1" wide. Sealant depth shall be minimum ¼" and maximum ½". The joint shall be stuffed with closed-cell polyethylene backer rod, or the bottom of the joint shall be taped with polyethylene bond breaker tape. Apply BarriBond HP into the joint and tool to a concave profile to assure complete fill of the joint and full contact with the substrate on each side of the joint.

Limitations

Use BarriBond HP as directed in CCW's membrane air systems, or in water-resistive barrier (WRB) systems by others as approved by CCW. BarriBond HP is not intended as a wear-resistant or traffic-resistant surface. BarriBond HP is not recommended for filling joints/gaps more than ½" deep. Do not apply BarriBond HP over wet substrates or over wood substrates having moisture content measuring 20% or higher.

Packaging

BarriBond HP is packaged in 20 fl. oz. sausages, 20 per case. Shelf life in original, unopened packaging is 12 months, provided the product is stored between 40°F and 80°F at maximum 50% relative humidity. Store BarriBond HP sausages in a cool, dry place protected from precipitation and direct sunlight.

LIQUID FLASHING & DETAIL SEALANT

BarriBond HP (High Performance)

Typical Properties

Property	Method	Results
Color		Navy Blue
Membrane Thickness CCW AVB & Applications: 40 mils		40 mils wet/40 mils dry
Liquid Flashing Theoretical Coverage Rate		6.27 sq. ft./20 fl. oz. sausage
% Solids		99%
VOC	EPA Method 24	<10 g/L
Application Temperature		15°F to 110°F
Service Temperature		-40°F to 200°F
Cure Time		40 mil membrane: 24 h @ 75°F/50% RH
Tack Free Time		Approx. 2 hours at 75°F/50% RH
Open Time		Approx. 45 minutes @ 75°F/50% RH
Low temp Crack Bridging	ASTM C836/ C1305	No cracking after 10 cycles at -15°F
Joint Movement	ASTM C920/ C719	Pass +/- 25%
Tensile Strength	ASTM D412	280 psi
Tensile Elongation	ASTM D412	740%

Limited Warranty

Carlisle Coatings & Waterproofing Incorporated (Carlisle) warrants this product to be free of defects in workmanship and materials only at the time of shipment from our factory. If any Carlisle materials prove to contain manufacturing defects that substantially affect their performance, Carlisle will, at its option, replace the material or refund its purchase price. This limited warranty is the only warranty extended by Carlisle with respect to its materials. There are no other warranties, including the implied warranties of merchantability and fitness for a particular purpose. Carlisle specifically disclaims liability for any incidental, consequential, or other damages, including but not limited to, loss of profits or damages to a structure or its contents, arising under any theory of law whatsoever. The dollar value of Carlisle's liability and buyer's remedy under this limited warranty shall not exceed the purchase price of the Carlisle material in question.